

# 100

SINCE  
1923

**POWERING  
GARLAND**

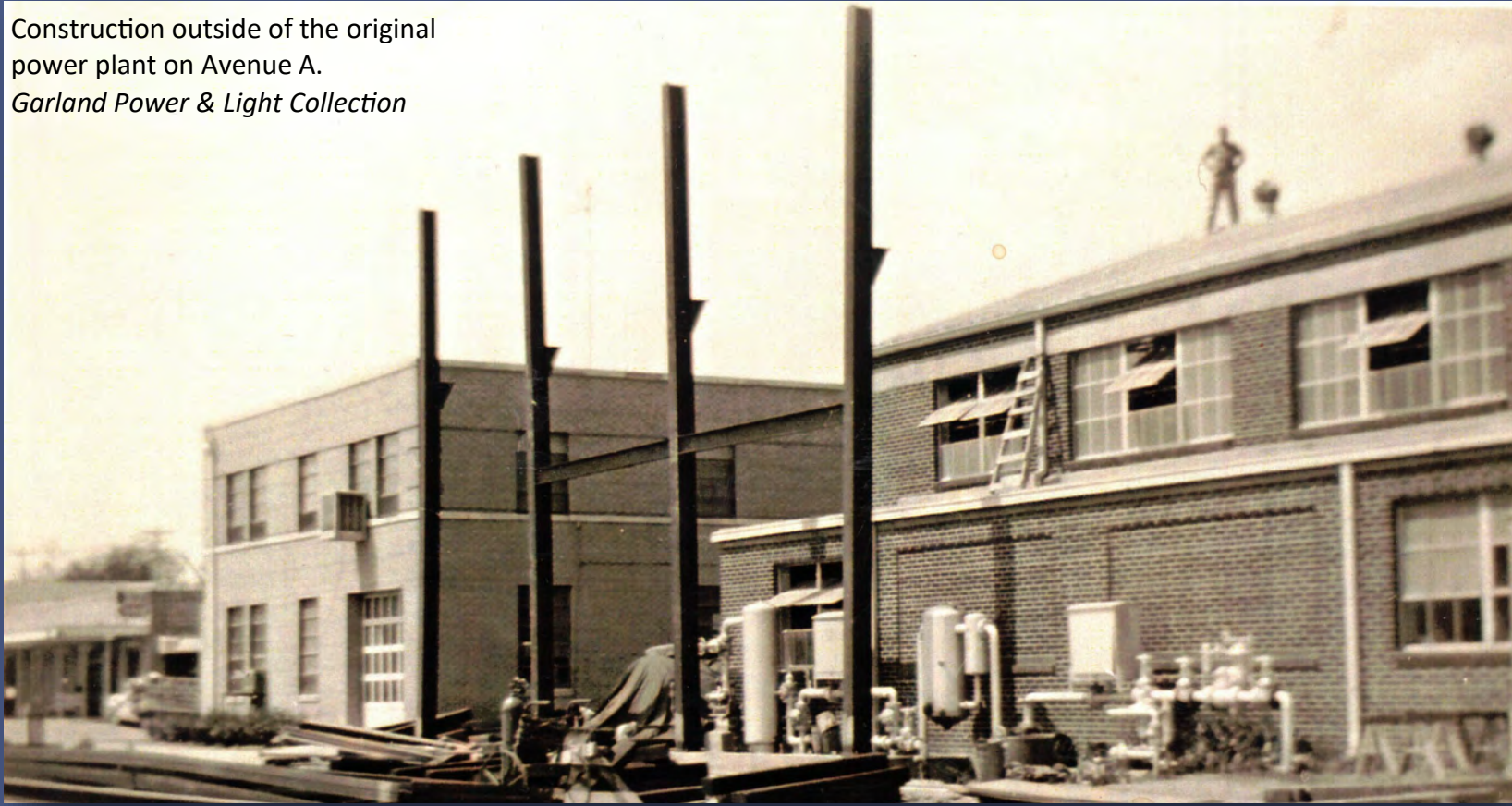




# 1920s

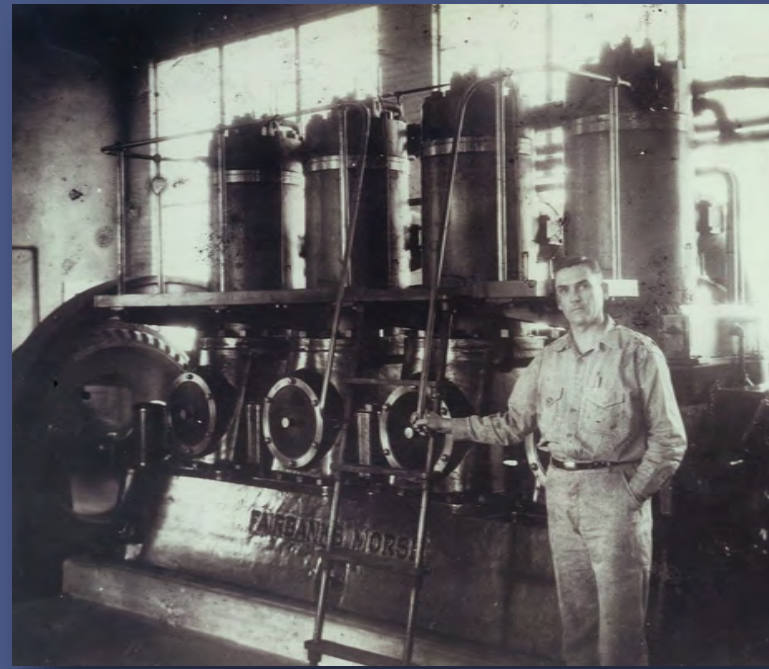


Construction outside of the original power plant on Avenue A.  
Garland Power & Light Collection

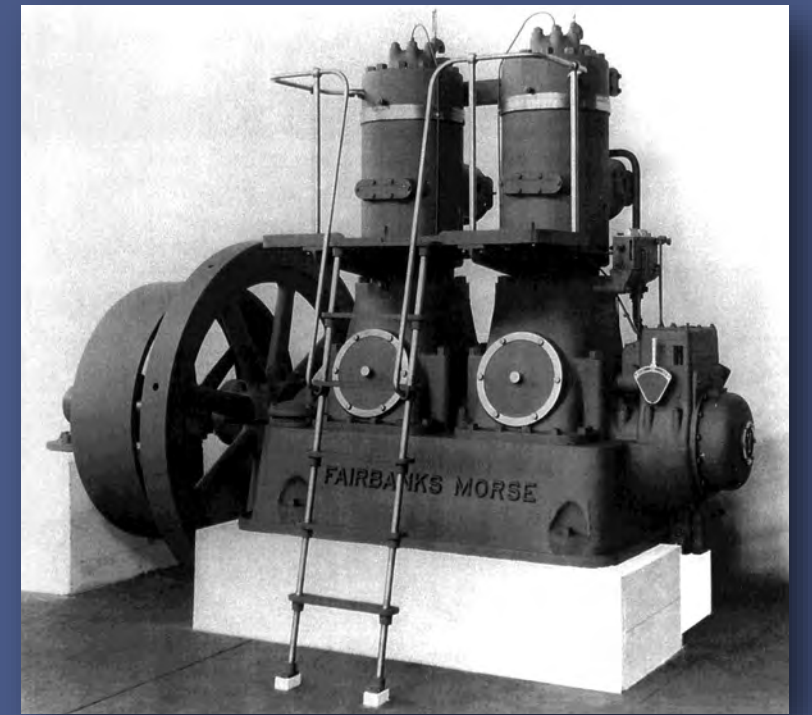


**April 1, 1923** C.E. Newman closes the switch on GP&L's 117 KW diesel generator, bringing service to 300 customers

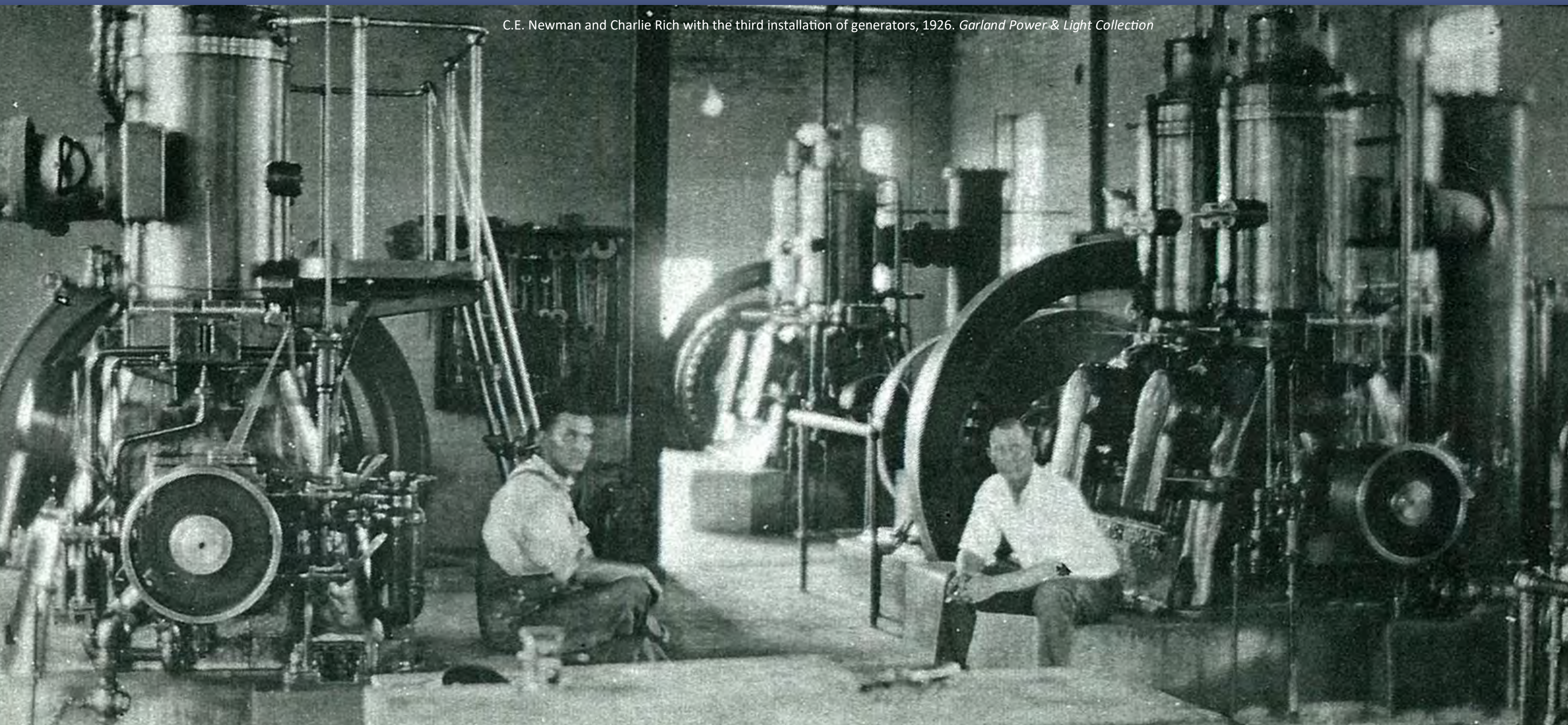
By **October 1923**, GP&L needs to add a third generator to meet rapid customer growth



C.E. Newman standing next to a generator in the original power plant. Garland Power & Light Collection



A 100 horsepower Fairbanks-Morse generator, the same model as the first generators used by GP&L.  
Garland Landmark Museum Collection



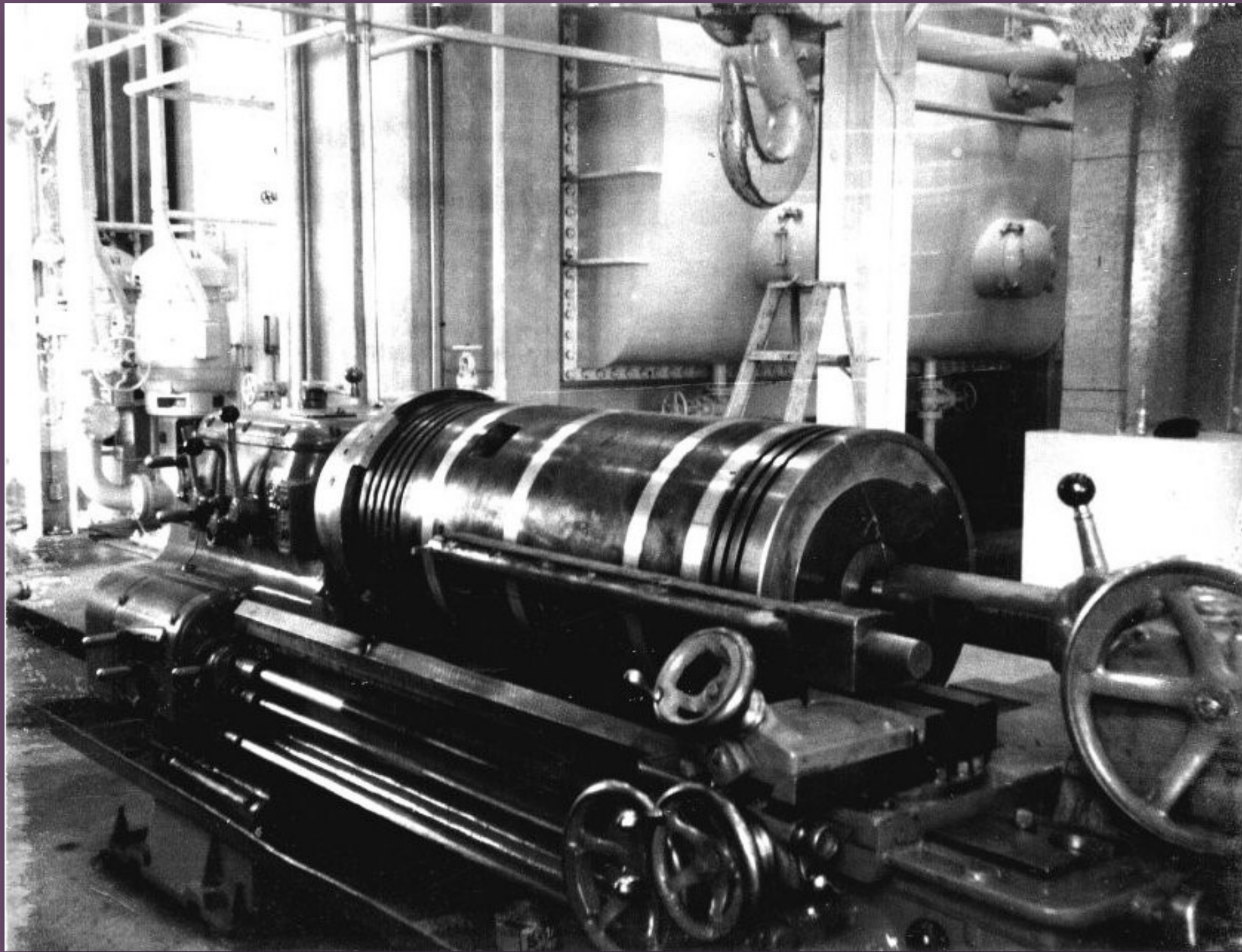
C.E. Newman and Charlie Rich with the third installation of generators, 1926. Garland Power & Light Collection



**POWERING GARLAND SINCE 1923**



# 1930s



Generating units in the power plant on Avenue A. *Garland Landmark Museum Collection*

Think of Us —  
Thanking You for  
“Keeping the Home Lights Burning”

Through the patronage of loyal Garland citizens the Home Light Plant provides salaries for we who are listed on the right. In turn, we distribute our salaries for the necessities of life here in the home town, thus keeping an endless chain of home loyalty in progress. Incidentally, this co-operation is building a community institution second to none, while at the same time contributing to the growth and progress of the community itself.

We voice our candid appreciation of the consideration shown by thinking citizens, and in this open message respectfully request that you “think of us THANKING YOU for KEEPING THE HOME LIGHTS BURNING.”

It is our intention to continue that caliber of service which will merit your continued support and to devote our efforts toward demonstrating the advisability of making our town 100 per cent in favor of

**GARLAND  
MUNICIPAL  
UTILITIES**

(If you desire to become one of the 100% users of home-owned utilities, ring 201 or 148, or see any employee, and the connections will be promptly made.)

C. E. NEWMAN  
*Supt. Utilities Plant*  
H. G. BAILEY  
*Water and Sewer Dept.*  
A. R. WADDILL  
*Chief Electrical Dept.*  
CLYDE MEANS  
*Electrical Dept.*  
JIM MORRIS  
*Plant Operator*  
B. M. McINTIRE  
*Plant Operator*  
L. E. BECHTOL  
*Fire Department*  
J. R. STULTZ  
*City Secretary*  
RAY NEWMAN  
*General Utility*  
H. Y. GRANTHUM  
*Mesquito Control*  
H. J. CASTLE  
*Police Chief*  
C. L. RANEY  
*Night Watchman*  
J. W. OGLE  
*Night Watch Ass't.*

*Garland News* ad supporting the continuing growth and progress of the Garland community. *Garland Power & Light Collection*

**1930** To meet a growing Garland’s needs, generating capacity increased to 420 KW



Lineman works on stadium lights with a growing Garland in the background. *Garland Power & Light Collection*



**POWERING GARLAND SINCE 1923**

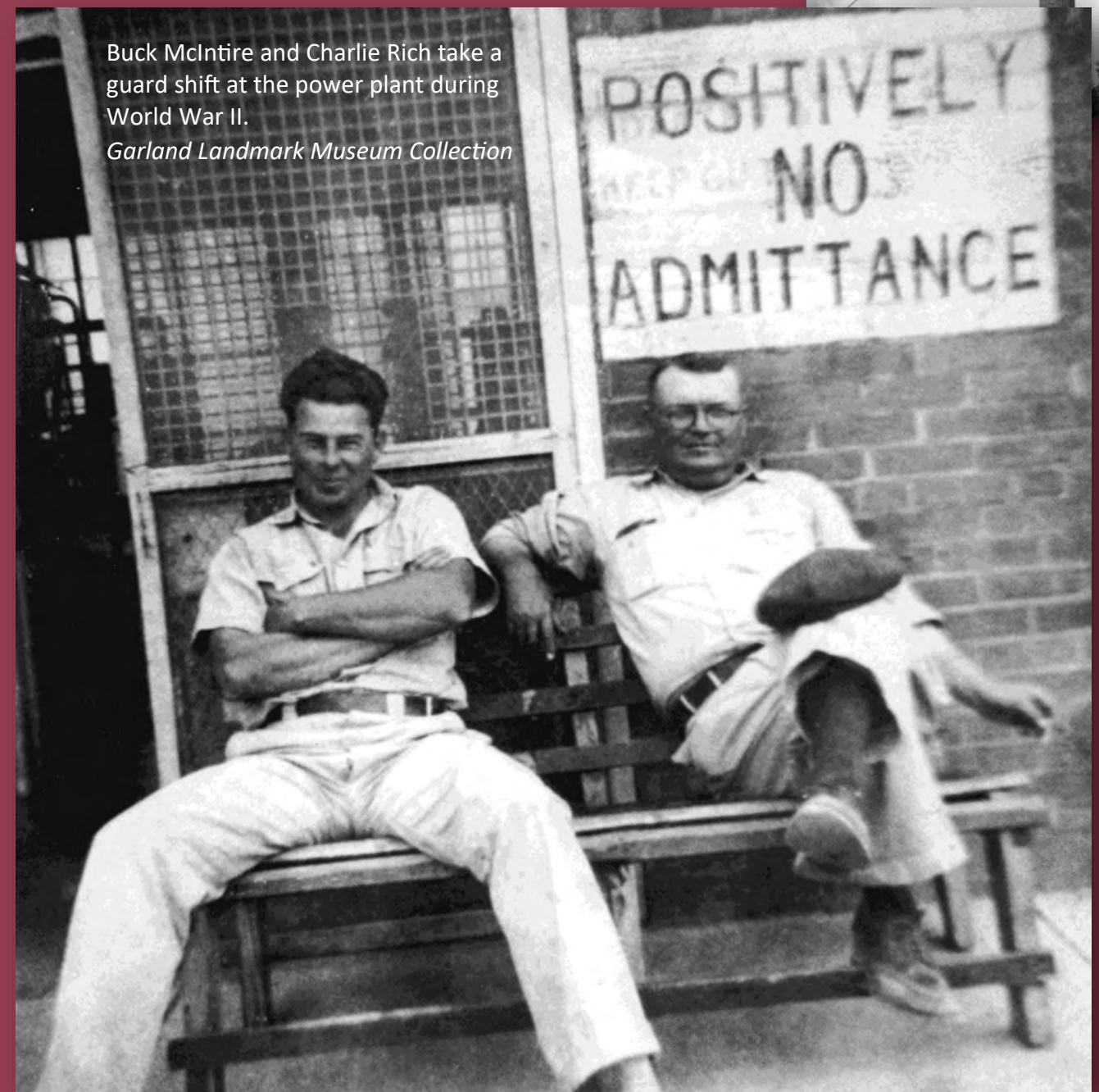


# 1940s

**1943** First inter-connection with another utility, the Brazos Electric Power Cooperative



**1942-1945** During World War II, the possibility of sabotage drove locals to increase security at critical places around Garland, including the power plant. For the first time, officials barred anyone other than approved personnel from entering the plant.



The plant on Avenue A was in the same building as the Fire Department, and generator operators would serve as volunteer firemen.  
*Garland Power & Light Collection*



**POWERING GARLAND SINCE 1923**

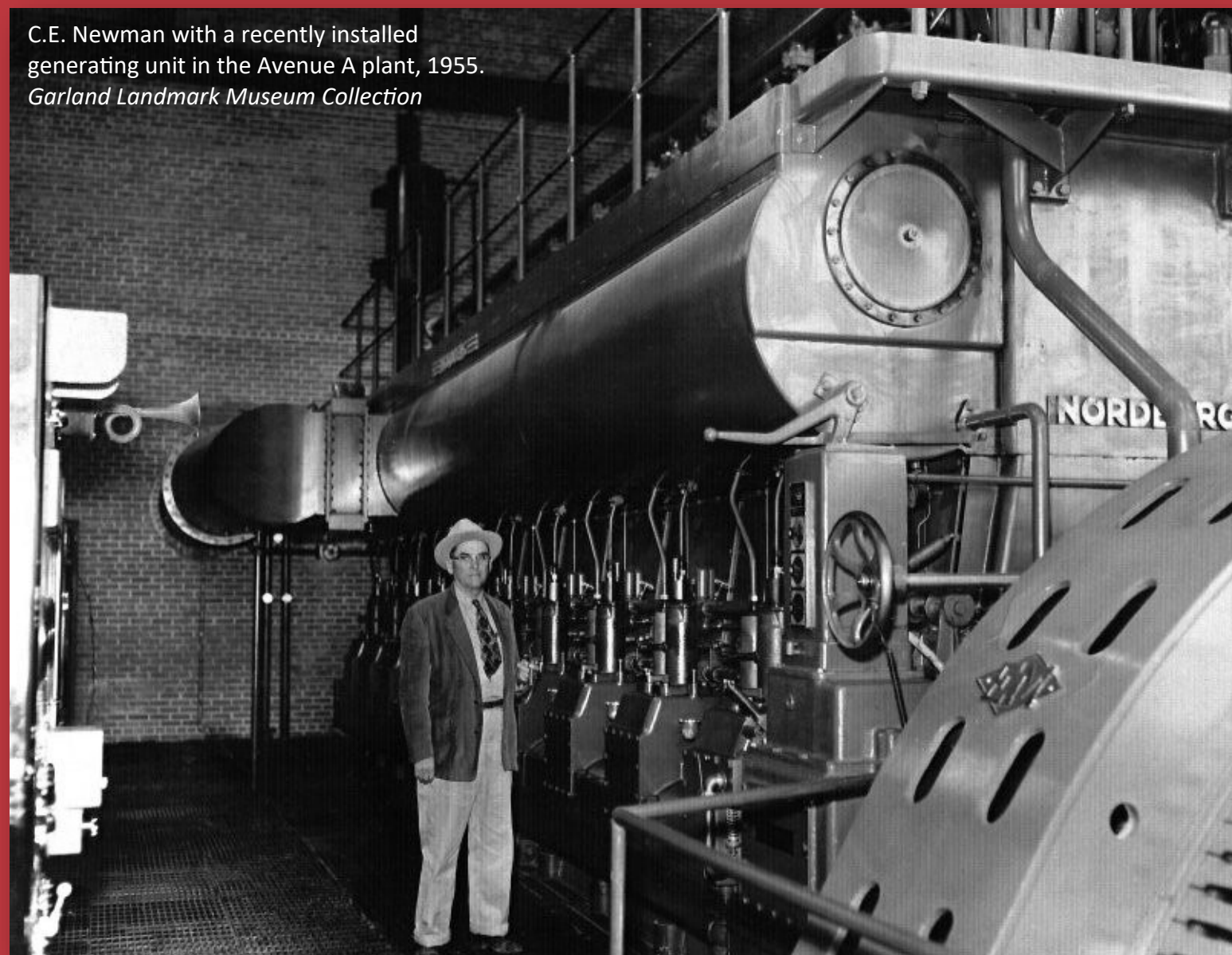


# 1950s

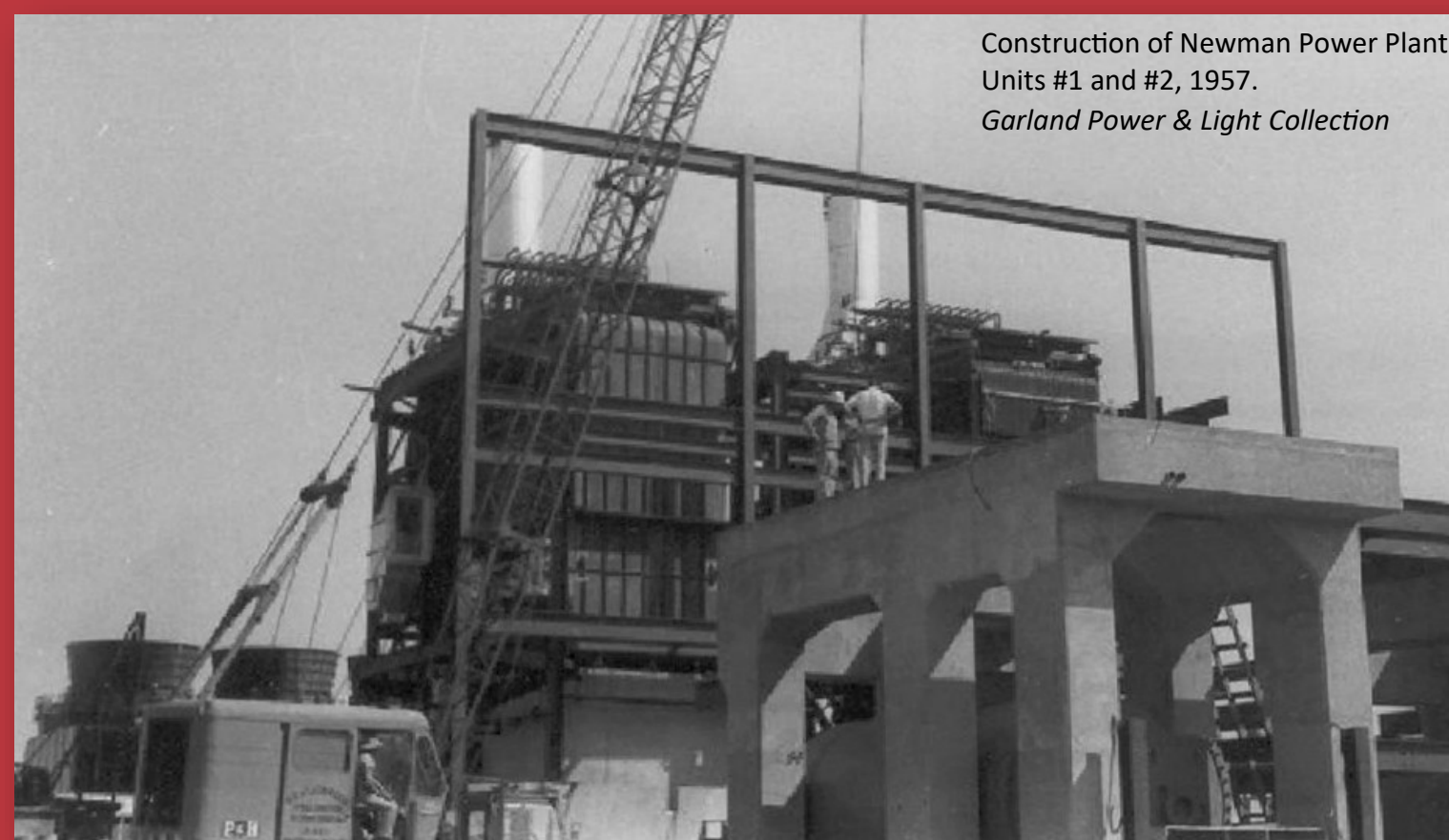
**1952** First line truck is purchased



**1955** Final expansion of the diesel plant is completed



**1957** Construction completed on C.E. Newman Power Plant Units #1 and #2 bringing capacity to 26 MW



**POWERING GARLAND SINCE 1923**



# 1960s

**1964** Final expansion of the Newman Plant to five units; C.E. Newman retires with GP&L having grown to 15,000 customers



Turbine generators inside Newman Power Plant, 1967.  
*Garland Landmark Museum Collection*



C.E. Newman, first general manager of GP&L, near the end of his GP&L career.  
*Garland Landmark Museum Collection*



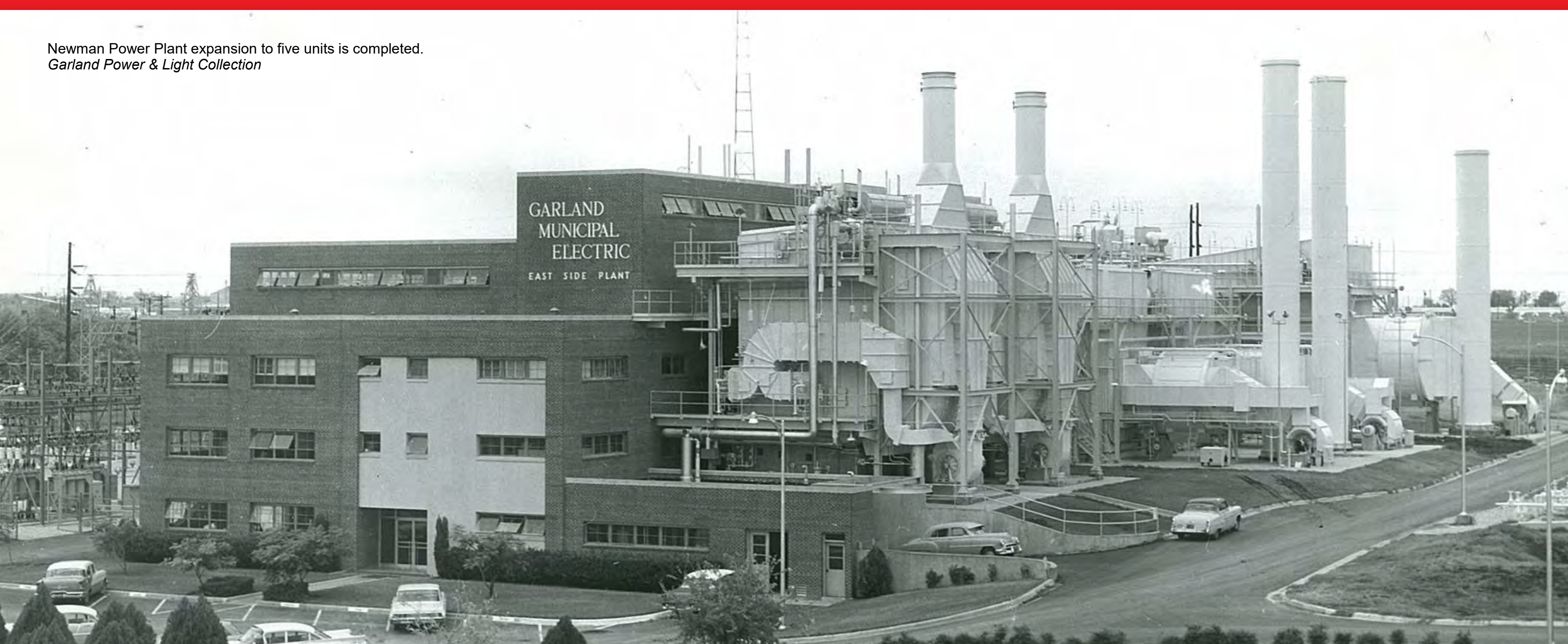
Construction of Olinger Unit #1, 1967. *Garland Landmark Museum Collection*

**1967** Construction of Ray Olinger Power Plant Unit #1 is completed near Lavon Lake



Presentation of the plaque on the naming of the Ray Olinger Power Plant to Mr. Olinger's wife, Lola Watson Olinger, with other members of the Olinger family, 1967.  
*Garland Landmark Museum Collection*

Newman Power Plant expansion to five units is completed.  
*Garland Power & Light Collection*



**POWERING GARLAND SINCE 1923**



# 1970s

**1971** Olinger Plant Unit #2 is completed

**1974** GP&L's System Operations Center opens

**1975** Olinger Plant Unit #3 is completed, with GP&L at 35,000 customers

**1977** Garland becomes a partner in the Texas Municipal Power Agency (TMPA), created to construct a coal-fueled plant to eliminate dependence on natural gas as a boiler fuel



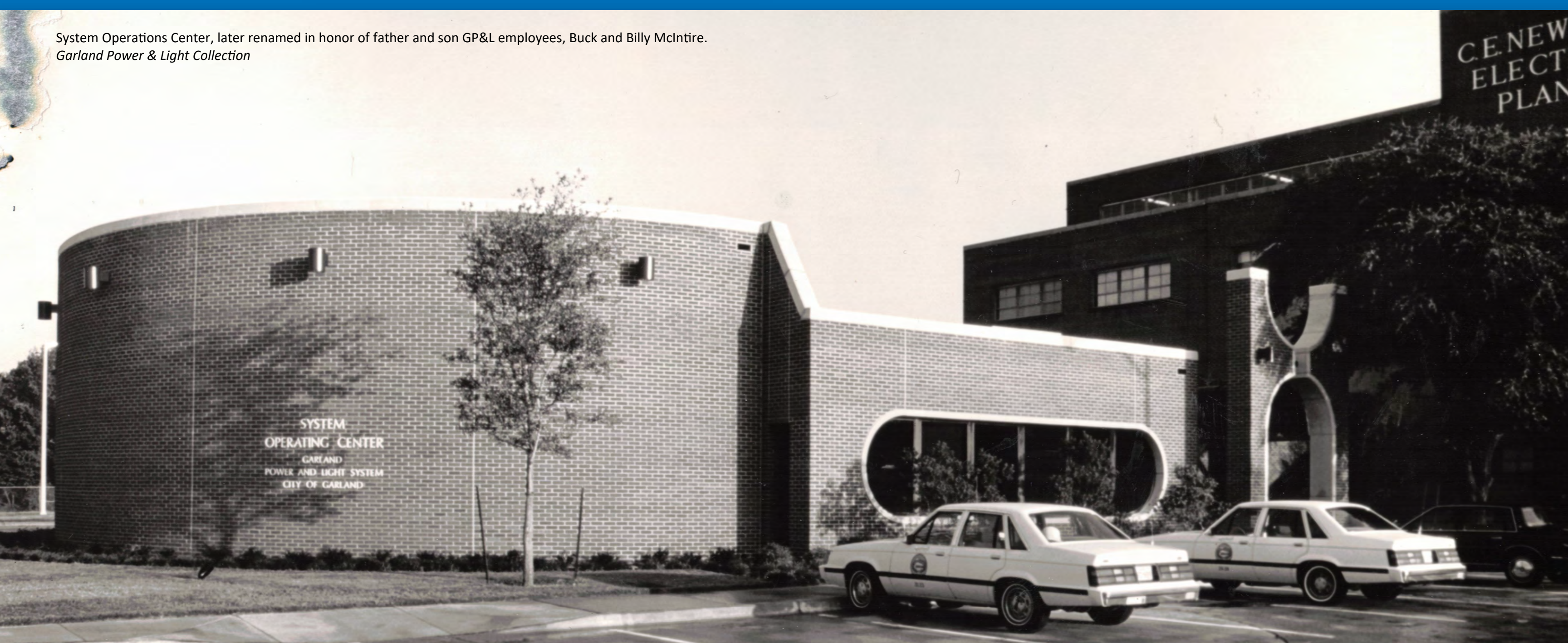
Construction of Unit #2 at Olinger Power Plant.  
Garland Power & Light Collection



Natural gas pipes at Olinger Power Plant. The microwave on the tower provided line-of-sight communications with the Newman Plant.

Garland Landmark Museum Collection

System Operations Center, later renamed in honor of father and son GP&L employees, Buck and Billy McIntire.  
Garland Power & Light Collection



**POWERING GARLAND SINCE 1923**



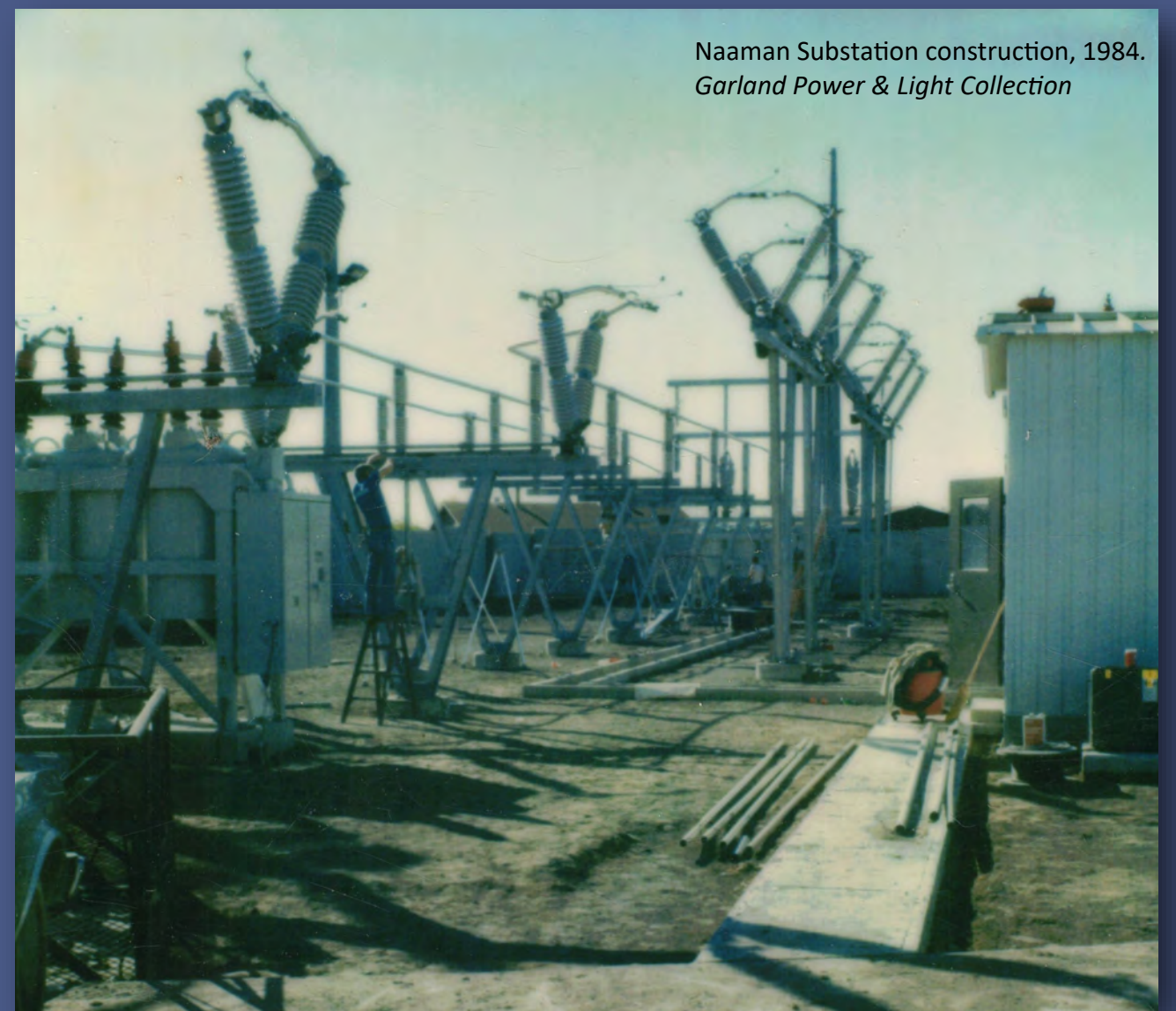
# 1980s

**1980** The diesel plant on Avenue A is retired



Gibbons Creek Steam Electric Station owned by TMPA, of which Garland is a member.  
*Garland Power & Light Collection*

**1983** TMPA's 420 MW Gibbons Creek Steam Electric Station is completed



Naaman Substation construction, 1984.  
*Garland Power & Light Collection*

**1984** Naaman Substation is the first substation completed in-house by GP&L personnel



Inside Olinger Power Plant control room, circa 1985.  
*Garland Landmark Museum Collection*



**POWERING GARLAND SINCE 1923**



# 1990s

**1993** GP&L purchases Farmer's Electric Cooperative facilities within Garland city limits



GP&L crew working on the static line of a transmission pole.  
*Garland Power & Light Collection*



Linemen conducting an electric arcing safety demonstration, 1995.  
*Garland Power & Light Collection*

**1994** GP&L develops its first employee apprenticeship training program for distribution line workers



GP&L crew reconstructing a distribution circuit and replacing a wood cross arm with a fiberglass arm.  
*Garland Power & Light Collection*



**POWERING GARLAND SINCE 1923**



# 2000s

**2001** 75 MW combustion turbine generator (Unit #4) is installed at Olinger Plant, with GP&L at 66,000 customers

**2003** GP&L purchases Spencer Power Plant in Denton, adding as much as 166 MW of energy production



Unit #4 at the Olinger Power Plant near Lavon Lake.  
Garland Power & Light Collection



Employees load a tree into the back of a Garland residents' truck at the Tree Power Free Tree Giveaway, 2008. Garland Power & Light Collection

**2007** GP&L and Garland Parks, Recreation & Cultural Arts establish the Tree Power Free Tree Giveaway program to provide free trees to Garland residents

GP&L's Spencer Power Plant in Denton, TX, 2000.  
Garland Power & Light Collection



**POWERING GARLAND SINCE 1923**



# 2010s

**2014** GP&L completes two transmission lines to bring wind power from West Texas

**2018** GP&L completes its portion of the Houston Import Project, a series of critical bulk power transmission lines for the ERCOT grid

**2018** Green Choice plan offers 100% renewable wind and solar energy to customers



GP&L obtains renewable energy from Texas wind farms, including Spinning Spur 3 west of Amarillo.  
*Garland Power & Light Collection*



A portion of the Houston Import Project, which increased grid capacity in the Houston area, 2018.  
*Garland Power & Light Collection*

The Lamesa solar project in West Texas provides solar power for GP&L.  
*Garland Power & Light Collection*



**POWERING GARLAND SINCE 1923**



# 2020s



GP&L employees volunteer at Garland's mass vaccination site during the pandemic, 2020.  
Garland Power & Light Collection

**2020+** GP&L provides safe, reliable electric service at competitive rates to Garland residents during the global COVID-19 pandemic



Inspecting equipment in the rebuilt Apollo Substation, 2020.  
Garland Power & Light Collection

**2021** TMPA sells the Gibbons Creek Steam Electric Station



Lineman drills into a distribution pole, 2022.  
Garland Power & Light Collection

**Today** With more than 73,000 customers, GP&L is the fourth largest municipal utility in Texas and the 43<sup>rd</sup> largest in the nation

Aerial view of the Ray Olinger Power Plant.  
Garland Power & Light Collection



**POWERING GARLAND SINCE 1923**