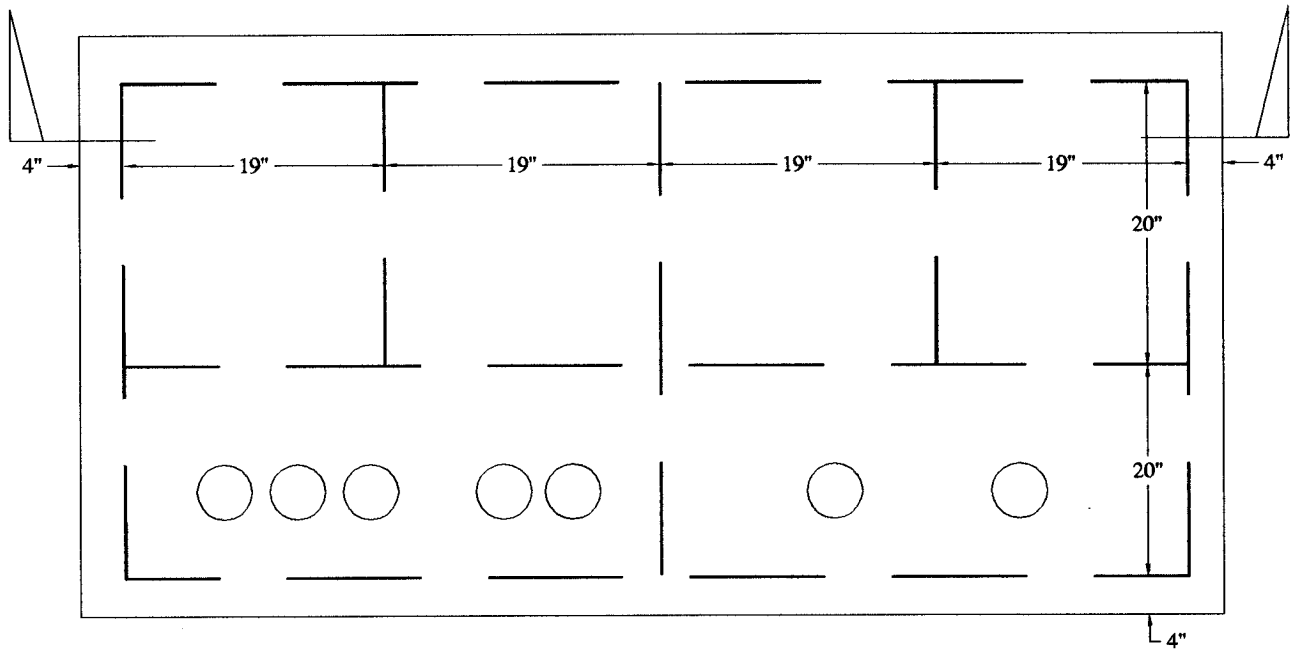


DETAIL A



MATERIAL:

33' - 5/8" REBAR 570-80-122-30
1/2 CUBIC YARD CONCRETE

TITLE:

**7' 4" TWO TRANSFORMER
PAD REBAR DETAIL**

GARLAND

POWER & LIGHT

APPROVED:

STANDARD NO.:

REF - 34

REVISED:	DATE:	APPROVED:
		CP