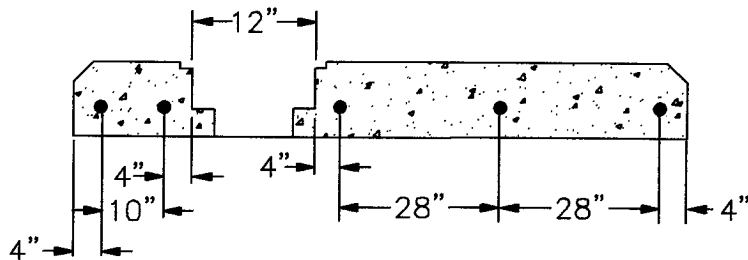
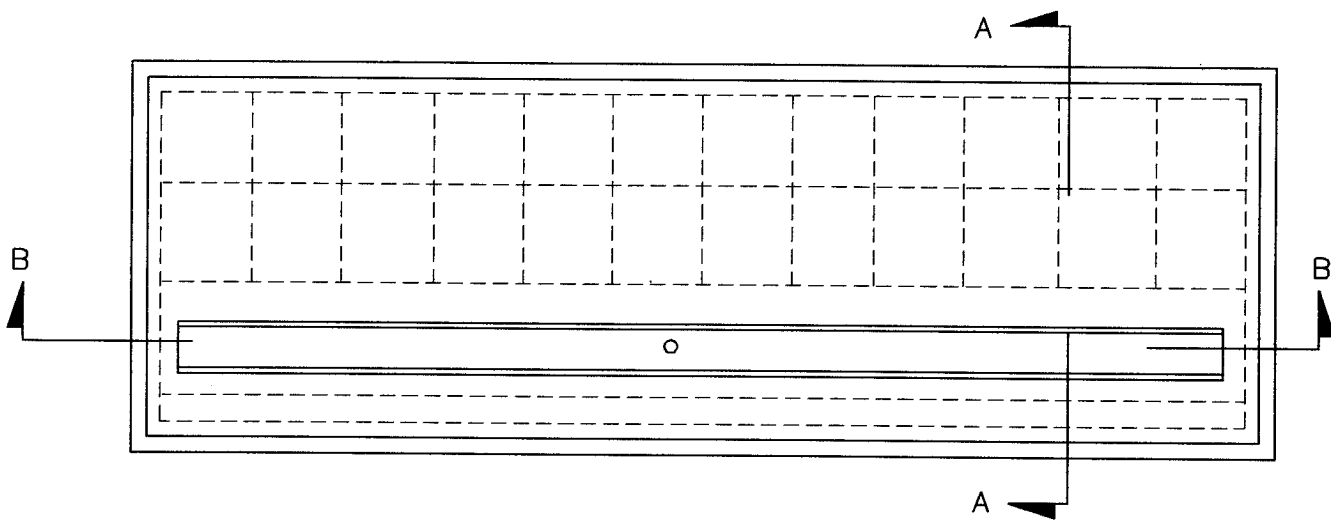
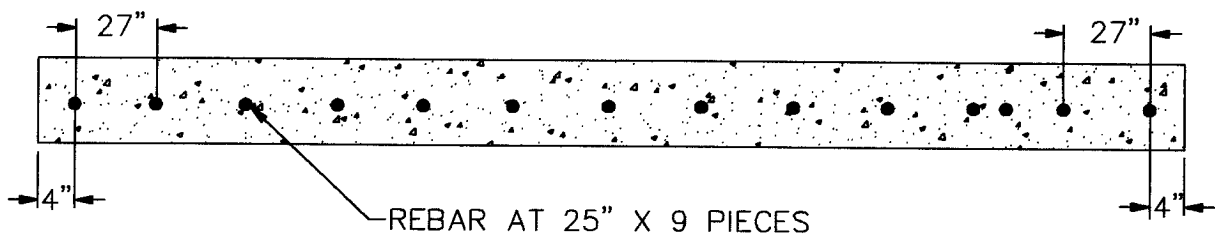


DETAIL A



DETAIL B



REF. DWG. 320A BLUE BOOK

TITLE:

8' x 26' REBAR DETAIL
FOR CONCRETE
TRANSFORMER PAD
WHEN CUSTOMERS LOAD
EXCEEDS 2000 KVA

GARLAND
POWER & LIGHT

STANDARD NO.:

UG-2565-2

DRAWN BY:	DATE:	APPROVED BY:
		CP
REVISED BY:	DATE:	APPROVED BY:
GL	7/9/04	

CONSTRUCTION STANDARD NO. : UG-2565

TITLE: XFMR PAD 8'X26' 2 XFMRS & SEC CUBICAL

REV. DATE: 5/21/2002

PIC. #	DESCRIPTION	IBM NO.	QTY.
0	ROD GROUNDING 5/8" X 8'	285-36-15108	5
0	REBAR 5/8" - 20' LENGTH	570-80-12230	10
9	BELL END 3" PVC ELECTRIC	285-14-71775	1
9	BELL END 3" PVC ELECTRIC	285-14-71775	1