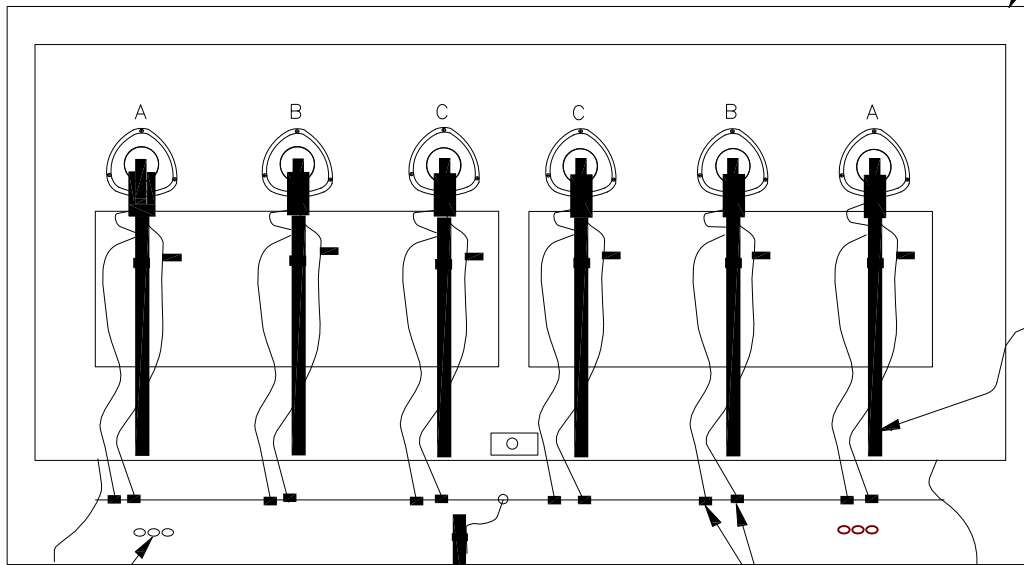
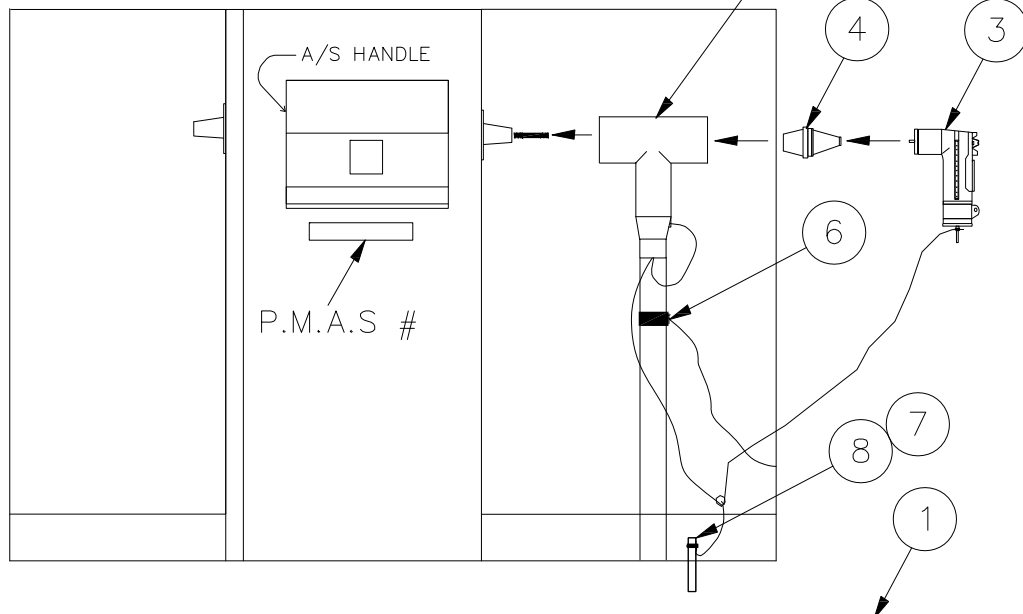


SIDE VIEW

200 AMP

600 AMP



FAULT INDICATORS

FRONT VIEW
600 AMP

5

MARK AS
NEXT SWITCH
OR RISER

ENGINEERING NOTE:

- FUSE'S & HOLDER'S COMES WITH SWITCH.
SMU-20: 285-32-25024
HOLDERS: 285-32-25025

TITLE:

P.M.A.S. 600/200

GARLAND
POWER & LIGHT

STANDARD NO.:

UG-2450

DRAWN BY: GL	DATE: 7/6/04	APPROVED BY:
REVISED BY: GL	DATE: 7/10/14	APPROVED BY:

CONSTRUCTION STANDARD NO. : UG-2450

TITLE: 600 AMP SWITCHGEAR

REV. DATE: 3/22/2005

PIC. #	DESCRIPTION	IBM NO.	QTY.
1	SWITCH GEAR 15KV W/DOOR EXTEND 600 A 200 A SIDES GD BUS W/ DIL	287-79-26010	1
2	ELBOW T-BODY 600 AMP 1000 MCM 175-220 MIL INSULATION	285-19-19133	6
3	ARRRESTOR, ELBOW, M.O.V. 9KV FOR 200 AMP LOAD BREAK BUSHING	286-04-20010	6
4	PLUG TAP REDUCING FOR 600 AMP ELBOW LOAD BREAK	285-19-19075	6
5	CONNECTOR SPLIT BOLT CU TO CU - #4/0 STR	285-18-18635	14
6	FAULT INDICATOR LOAD TRACKER PADMOUNT - SINGLE PHASE	286-30-10345	6
7	CLAMP GROUND ROD 5/8"	285-13-16025	2
8	ROD GROUNDING 5/8" X 8'	285-36-15108	1

CONSTRUCTION STANDARD NO. : UG-2450A**TITLE: 600 AMP SWITCHGEAR 1000 MCM**

REV. DATE: 9/26/2003

PIC. #	DESCRIPTION	IBM NO.	QTY.
0	CLAMP GROUND ROD 5/8"	285-13-16025	2
0	CONNECTOR SPLIT BOLT CU TO CU - #4/0 STR	285-18-18635	14
0	PLUG TAP REDUCING FOR 600 AMP ELBOW LOAD BREAK	285-19-19075	6
0	ELBOW T-BODY 600 AMP 1000 MCM 175-220 MIL INSULATION	285-19-19133	6
0	ROD GROUNDING 5/8" X 8'	285-36-15108	1
0	ARRRESTOR, ELBOW, M.O.V. 9KV FOR 200 AMP LOAD BREAK BUSHING	286-04-20010	6
0	FAULT INDICATOR LOAD TRACKER PADMOUNT - SINGLE PHASE	286-30-10345	6
0	SWITCH GEAR 15KV W/DOOR EXTEND 600 A 200 A SIDES GD BUS W/ DIL	287-79-26010	1