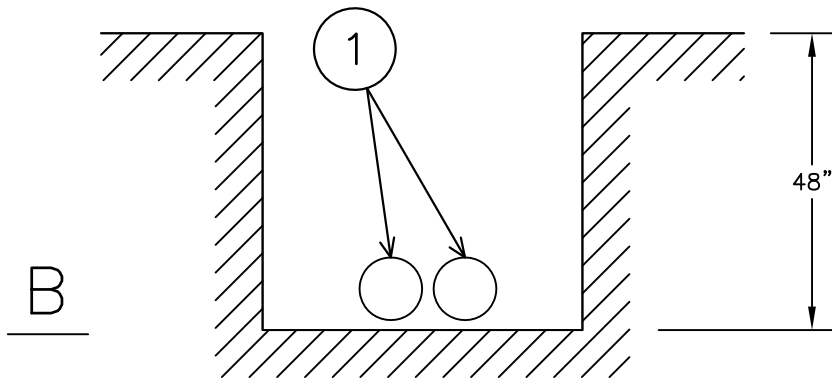


A



B

NOTE:
 THIS CONSTRUCTION STANDARD IS
 FOR LABOR AND EQUIPMENT ONLY.
 THE ENGINEER IS RESPONSIBLE FOR
 ADDING ALL THE NEEDED MATERIAL
 SEPARATELY.

D	DIRT
R	ROCK

DRAWN BY: CY/JC	DATE: 9/24/15	APPROVED BY:
REVISED BY:	DATE:	APPROVED BY:

TITLE:
 INSTALL 4" PVC CONDUIT
 IN A TRENCH

GARLAND
 POWER & LIGHT

STANDARD NO.:
 UG-2204