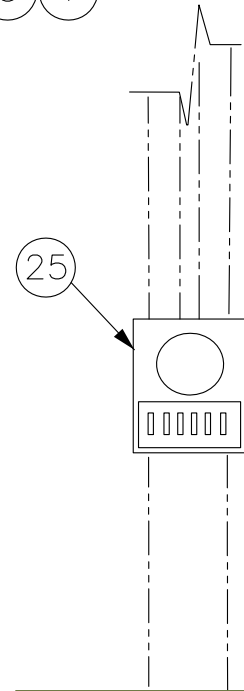


ENGINEERING NOTES:

- ENGINEERING TO DETERMINE AMP CONNECTOR SIZES
- CT SIZE OPTIONS
 - 25/5 – 287-18-13230
 - 50/5 – 287-18-13250
 - 100/5 – 287-18-13290
 - 200/5 – 287-18-13330
 - 400/5 – 287-13-13340
- METERING DEPARTMENT TO PROVIDE CONTROL WIRES.



TITLE:

THREE PHASE PRIMARY
METERING –
BIG WIRE

GARLAND
POWER & LIGHT

STANDARD NO.:

OH-940

DRAWN BY: CY/JC	DATE: 7/9/19	APPROVED BY: DM 7/8/19
REVISED BY:	DATE:	APPROVED BY:

Construction Standard No.

OH-940

Title: THREE PHASE PRIMARY METERING

Rev. Date: 5/7/2019

Pic #	Description	IBM NO.	Qty
1	MOUNT PRIMARY METERING ALUMA-FORM	285-38-15162	1
2	BOLT MACHINE 5/8" X 12" W/NUT	285-08-10786	2
3	WASHER SQUARE 5/8" 250/BX	285-08-15320	2
4	WASHER SPRING DOUBLE COIL 5/8" 500/BX	285-08-85430	2
5	TRANS POTENTIAL 60/1 7200V	287-65-25100	3
6	BIRD GUARD BUSHING COVER RELIAGUARD BC-14991	285-39-24101	3
7	CABLE, 5 KV # 2 AWG OKOGUARD	280-42-50005	15'
8	LUG, #2 AWG, DOUBLE HOLE, POLE GROUNDING	285-49-26575	3
9	BOLT HEX HD 1/2" X 1-1/2" GALVANIZED	320-09-11258	36
10	NUT HEX 1/2" GALVANIZED	320-09-13051	36
11	WASHER BELLEVILLE 9/16" STN/ST	320-09-30130	72
12	#4/0 CU 2-HOLE COMPRESSION LUG	285-49-17550	6
13	CABLE CU 4/0 AWG 19 STR. SNGL COND. 600V TYPE RHH, RHW, USE	280-42-14070	50'
14	SWITCH, LINE TAP, BRIDGES TYPE LER, 900 AMP	286-80-53530	6
15	DISCONNECT 900 AMP SINGLE PHASE W/POST INSULATOR AB CHANCE	286-80-54110	3
16	LUG TERMINAL 2H PAD COMPR 477 MCM ACSR, BLACKBURN AL S-28	285-49-17524	6
17	#477 ACSR HAWK 26/7 STR	280-07-13125	20'
18	#6 CU. BARE SOLID 315 FT PER ROLL - truck stock	280-09-20300	10'
19	CONNECTOR CRIMPIT CU. #6 - #6	285-18-17010	2
20	1" CONDUIT, FLEXIBLE, NON-METALLIC LIQUIDTIGHT	285-14-46610	20'
21	1" CONNECTOR, CONDUIT, FLEXIBLE, NON-METALLIC LIQUIDTIGHT	285-14-12525	14
22	10" x 10" x 4" METAL JUNCTION BOX, NON-STOCK ITEM	000-00-00005	1
23	CONDUIT RIGID 1" GALV 10' LENGTH	285-14-14070	3
24	STRAP 1" 2 HOLE RIGID - NON STOCK ITEM	000-00-00035	6
25	SOCKET,ELECTRICAL,FOR 3 PHASE METER REQU	285-52-23210	1

Garland Power & Light



OH-940